

# The solution for Laser printing with Spot colors

## Simple & Powerful

### Better quality:

Profile your supports in just a few steps and get bright, precise and gray colors with more neutral thanks to the integrated "Power Profiler" module.

### More Productivity:

Mac / PC Flow Manager client, imposition, front-back calibration, lots of handy utilities.

### Lower consumption:

Optimization of toner usage for lower consumption, calculation of file coverage.

### Special color management interface:

Simple configuration of spot colors with preview directly on the RIP interface.



Available for  
Windows® o Mac® OS



**PowerPlotter** Technology

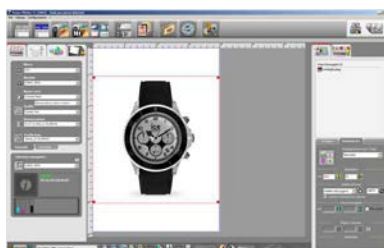
\* Advanced version





## DEV PSprint

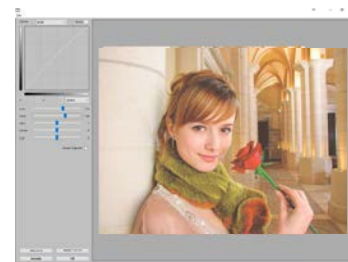
**PowerPlotter** Technology



### User friendly interface.

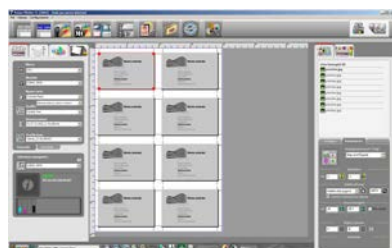
User friendly interface that allows you to keep all print parameters under control. CMS for the management of ICC input and output profiles (paper), Soft Proofing function to allow easy verification of color quality on the display (requires calibrated monitor).

Visual print report with automatic storage of all printed jobs, possibility to reprint a job with the same parameters and with the same quality (if the printer is in the same conditions).



### Color correction with curves and preview

- Correction of images with curves and cursors and real print preview.
- Digital filter to improve image detail.
- CMS for the management of ICC profiles of input and output (paper), Soft function Proofing to allow for easy verification color quality on the display (requires calibrated monitor).

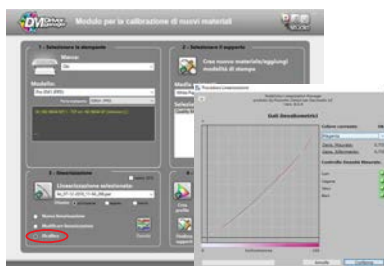


### Imposition generator.

Rules for the management of the various formats, creation of booklets, layout for paperback, etc ...

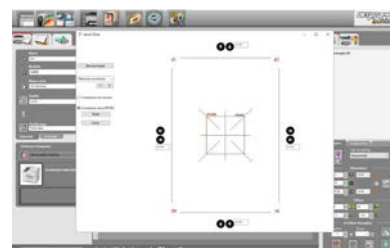
Interface on the working table to generate new imposition rules.

Automatic pagination of double-sided business cards.



### Printer recalibration.

Integrated printer recalibration system by reading a linearization chart.



### Double-sided printing compensation.

Compensation of centering and duplex printing on the two X and Y axes. Possibility to save different compensations for different paper paths or paper types.

### Features - DEV PSprint SpecialColor

Languages ITA/ENG/FR/D/PT/ESP/HUN/RU  
Upgradable

YES

#### Formats and protocols

Supported file types  
TIFF, JPEG, BMP, PNG, PSD(v5), PDF, EPS, PS

Maximum print width  
PostScript level 3/PDF

A3+  
YES

#### Colour correction functions

Tone, saturation, brightness and contrast  
Color correction curves / Preview / ProfileTest  
Spectrophotometer support  
Recalibration

YES  
YES  
YES  
YES

#### ICC profiles management

Preview / Saving  
Printing (Input, Output, Simulation)

YES  
YES

#### B.G.A.P.™ Technology

Driver Manager (make new linearization & profile)

YES  
optional

#### Image Quality

image quality enhancement filter  
Scaling management

YES  
YES

#### Print Management

Print report with preview and reload of the status  
Number of printer queue (plotter)

YES  
1

#### Print modes

Network  
Print to file  
Printing and calculation (in same time/consecutive)  
Parallel calculation on multiple printers/multitable

YES  
YES  
YES  
Optional

#### Other features

Imposition  
Hot Folder  
  
Enlargement, reduction, moving, cropping

YES  
1  
  
YES

Custom printing configuration

YES

Spot Color management  
Pantone® management  
Device-Link / Profile Creation (Power Profiler)  
Self-certification of proofing (Power Certifier)  
Direct print from application  
Coverage calculation  
Driver and software update from Internet

YES  
optional  
optional  
optional  
YES  
YES  
YES

#### Software Protection:

USB Dongle

#### System requirements (min. / suggested) :

- **RAM:** 4Gb / 16Gb
- **HDD:** 200Gb / 1Tb
- **CPU:** Pentium® Dual-Core / Intel series I3 - I5 - I7
- **OS Mac:** Mac OS last three releases
- **OS Win:** Windows 64Bit 7 / 8 / 10

#### Drivers:

- A digital PostScript® printer of your choice