

The solution for Laser printing with Spot colors

Simple & Powerful

Better quality:

Profile your supports in just a few steps and get bright, precise and gray colors with more neutral thanks to the integrated "Power Profiler" module.

More Productivity:

Mac / PC Flow Manager client, imposition, front-back calibration, lots of handy utilities.

Lower consumption:

Optimization of toner usage for lower consumption, calculation of file coverage.

Special color management interface:

Simple configuration of spot colors with preview directly on the RIP interface.



Available for Windows® or Mac® OS



BackGroundAdaptiveProfile

 PowerPlotter Technology

* Advanced version

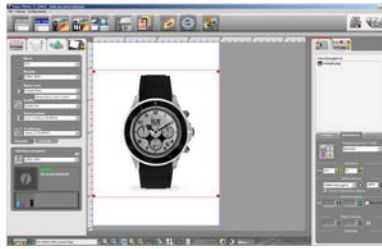




DEV PSprint SpecialColor

PowerPlotter Technology

B.G.A.P.™ for [Dark] Paper
Technology



User friendly interface.

User friendly interface that allows you to keep all print parameters under control. CMS for the management of ICC input and output profiles (paper), Soft Proofing function to allow easy verification of color quality on the display (requires calibrated monitor).

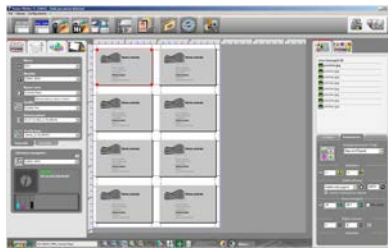
Visual print report with automatic storage of all printed jobs, possibility to reprint a job with the same parameters and with the same quality (if the printer is in the same conditions).



Dark Paper Print with B.G.A.P.™*

- Automatic white extraction with B.G.A.P.™ or Hybrid Profile technology for printing on colored papers and printers with white toner for 3D effect printing with low toner consumption (on dark paper does not use black toner)
- Correction of images with curves and cursors and real print preview.
- Digital filter to improve image detail.

* printers with white toner



Imposition generator.

Rules for the management of the various formats, creation of booklets, layout for paperback, etc ...

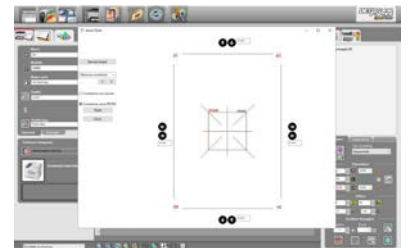
Interface on the working table to generate new imposition rules.

Automatic pagination of double-sided business cards.



Printer recalibration.

Integrated printer recalibration system by reading a linearization chart.



Double-sided printing compensation.

Compensation of centering and duplex printing on the two X and Y axes.

Possibility to save different compensations for different paper paths or paper types.

Features - DEV PSprint SpecialColor

Languages ITA/ENG/FR/D/PT/ESP/HUN/RU
Upgradable

YES

Formats and protocols

Supported file types
TIFF, JPEG, BMP, PNG, PSD(v5), PDF, EPS, PS

Maximum print width
PostScript level 3/PDF

A3+
YES

Colour correction functions

Tone, saturation, brightness and contrast
Color correction curves / Preview / ProfileTest
Spectrophotometer support
Recalibration

YES
YES
YES
YES

ICC profiles management

Preview / Saving
Printing (Input, Output, Simulation)

YES
YES

B.G.A.P.™ Technology

Driver Manager (make new linearization & profile)

YES
optional

Image Quality

image quality enhancement filter
Scaling management

YES
YES

Print Management

Print report with preview and reload of the status
Number of printer queue (plotter)

YES
1

Print modes

Network
Print to file
Printing and calculation (in same time/consecutive)
Parallel calculation on multiple printers/multitable

YES
YES
YES
Optional

Other features

Imposition
Hot Folder

YES
1

Enlargement, reduction, moving, cropping

YES

Custom printing configuration

YES

Spot Color management

YES

Pantone® management

optional

Device-Link / Profile Creation (Power Profiler)

optional

Self-certification of proofing (Power Certifier)

optional

Direct print from application

YES

Coverage calculation

YES

Driver and software update from Internet

YES

Software Protection:

USB Dongle

System requirements (min. / suggested) :

- **RAM:** 4Gb / 16Gb
- **HDD:** 200Gb / 1Tb
- **CPU:** Pentium® Dual-Core / Intel series I3 - I5 - I7
- **OS Mac:** Mac OS last three releases
- **OS Win:** Windows 64Bit 7 / 8 / 10

Drivers:

- A digital PostScript® printer of your choice