



Available for
Windows or Mac OS

Innovative software for creating Multichannel profiles

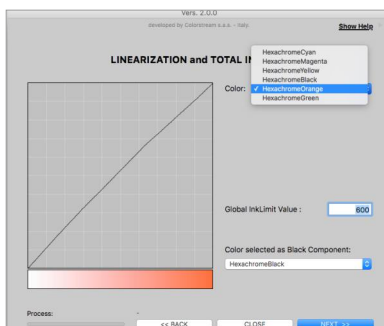
- Power Profiler Multichannel is a profiling tool totally dedicated to N-colors output devices. It can produce ICC V4-compliant color profiles for every printer utilizing from 3 to 8 color inks, with no restriction in their respective hues, saturations or densities. It has been developed to handle a huge number of different color configurations, including or not the established CMYK process colors.
- The key feature of the technology behind this application is the capability to separate inks into different subsets - distinguishing inks into first, second and third generation colors - according to their relative influence over the device gamut. Color components useful to reproduce grey tones are also isolated from other ones and managed separately according to estimated ink limitations.
- The software has been designed to provide optimal color quality with the highest possible level of automation, not requiring the users to browse through complex parameters and settings. Advanced Mode is also available for those who need to customize the profiling process.

The Power Profiler Multichannel development was aimed to meet the expectations of the real-world printing industry: The result is a product that can easily fit into a wide range of industry applications, from publishing to packaging and textile printing. The flexibility of its color engine can improve color reproduction even in the most demanding situations, like the ones found in the industrial printing systems that operate in the tiling factories.



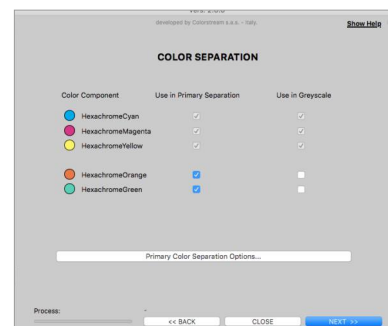
PowerProfiler MultiChannel

Available for
Windows or Mac OS



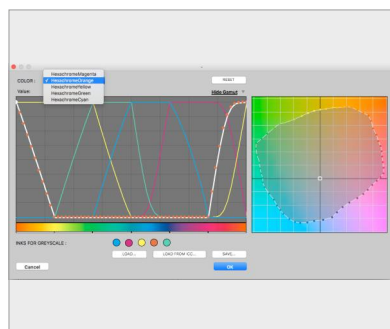
Linearization e Total ink

- Preview of linearization curves.
- Selection of total ink limit.
- Automatic and manual detection of color selected as Black component (if present).



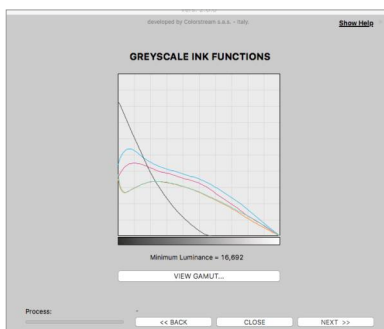
Multichannel ICC profile separation setting

- Automatic and manual detection of grey ink components.
- Automatic and manual configuration of optimal ink-sets for color separation.



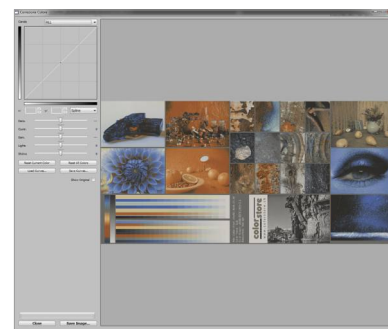
Preview of automatic separation curves

- Window preview of automatic separation curves for first generation colors.
- Custom editing for first generation color curves with gamut preview.



Preview of greyscale ink functions

- Automatic and manual configuration of black ink separations (if present).
- Interactive window preview of greyscale ink functions
- Preview of profile gamut with 3D and 2D visualization



Multichannel image editor

- Color correction of multichannel files with curves and sliders, can be performed through the handy utility who can guarantee a faithful monitor preview (soft-proofing) of graphic file.
- Accurate simulation of the color of the substrate.

PowerProfiler MultiChannel

Main features:

- ICC color profiles creation (v.4)
- Color models: RGB / CMYK / Multichannel
- Max numbers of colors: 8
- Automatic and manual (Custom) mode for color profiles creation: detection and configuration of black (if present) and grey ink components calculation of color-separation curves for first, second generation colors and greyscale component.
- Image Editor for Multichannel graphic files with accurate soft-proofing.
- Small Gamut function for low-gamut inks (ceramic environment).
- W.P.O. (White Point Optimizer) function to increase the detail on the graphic files (mainly ceramic market).
- Dynamic Test-Chart generation engine that optimizes the target testcharts to specific printing conditions.
- Supported Reading Tools: X-Rite i1, i1iO, i1iSis - Barbieri Spectro Swing, LFP

Software protection:

USB Hardware Key

System requirements:

- RAM: 4Gb
- HDD: 200Gb / 1Tb
- CPU: Pentium® Quad-Core / Intel series I3 - I5 - I7 or CPU compatible
- OS Mac: Mac OS last three releases
- OS Win: Windows 7 / 8 / 10 64 bit
- Language: Italian - English